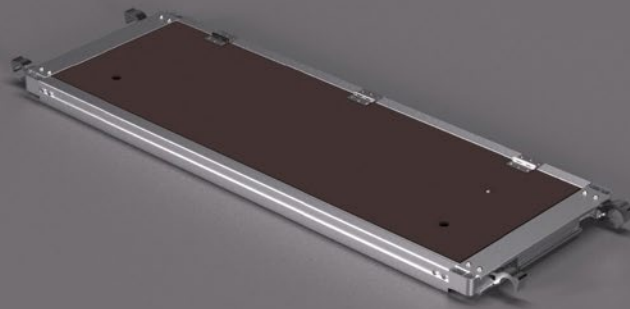


PRODUCT DATA SHEET

HD 1.8m Stair Trap Unit (Step)



PART NO.	2049
PART NAME	HD 1.8m Stair Trap Unit (Step)
WEIGHT	17.7 kg
DIMENSIONS (MM)	(l) 1875 (w) 610 (d) 70
TOWER STANDARDS	BS EN 1004-1:2020 & BS 1139-6:2022 when used in accordance with the relevant Alto manual or used with a bespoke design and assembly plan.
DESCRIPTION	The trap platform used at the top of a stair ladder unit on a stair tower.
ASSOCIATED PARTS	2205 - HD 2m Stair Ladder Unit

Alto Access Products

Unit 19 Howard Road, Redditch, Worcestershire. B98 7SE

+44(0)1527 500577 | sales@altoaccess.com | www.altoaccess.com

